

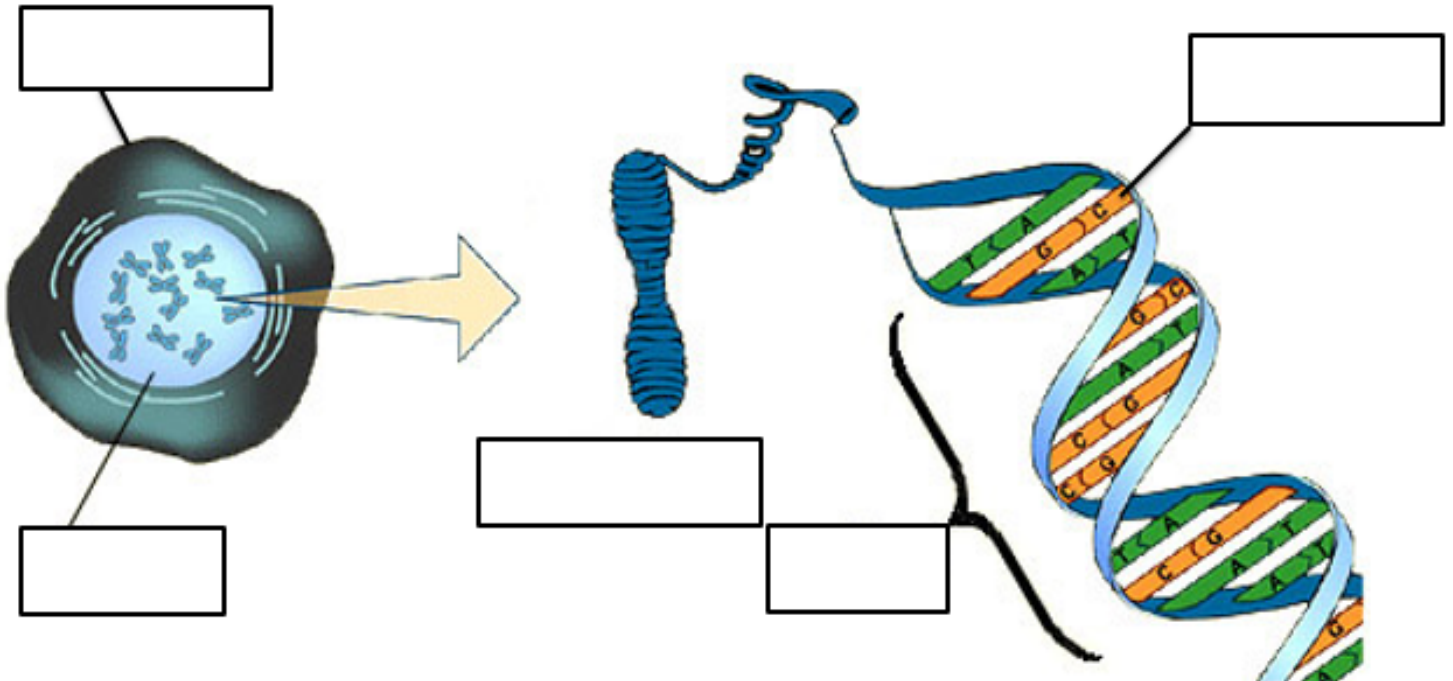
Match IT: Draw lines to match up the word with the correct definition

Gamete
Chromosome
Gene
Genotype
Phenotype
Dominant
Recessive
Allele
Homozygous
Heterozygous

A structure that is made of DNA and is found in the nucleus
Where a characteristic is expressed if both copies are present
Sex cells such as sperm and egg
The alleles present
A small section of DNA
Where an allele is always expressed even if only one is present
The two alleles are different Bb
Different form of the gene
The alleles that are expressed
The two alleles are the same e.g. BB or bb

Label IT

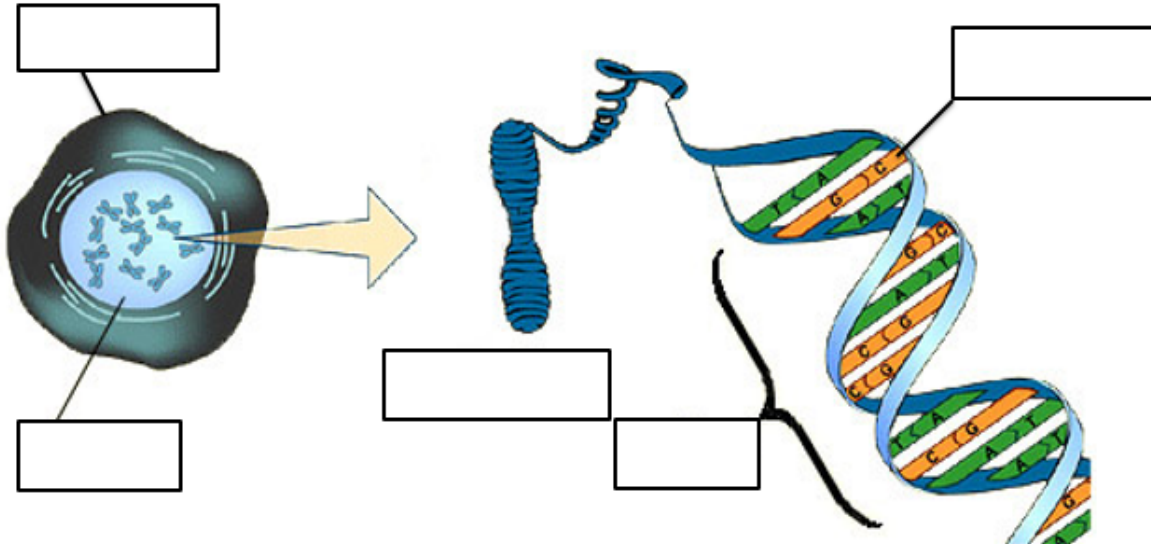
Label the diagram.



Match IT and Label IT

Match the key word to the definition.










Use the key words to label the diagram.



Cell
Nucleus
Chromosome
Gene
Allele

A version of a gene
The smallest part of an organism
A small section of DNA
Contains genetic material, DNA
A structure that is made of DNA and is found in the nucleus

Dominoes

The two alleles are the same e.g. BB or bb	Chromosome 
A structure that is made of DNA and is found in the nucleus	Recessive 
Where a characteristic is expressed if both copies are present	Gamete 
Sex cells such as sperm and egg	Genotype 
The alleles present	Gene 
A small section of DNA	Dominant 
Where an allele is always expressed even if only one is present	Heterozygous 
The two alleles are different Bb	Allele 
Different form of the gene	Phenotype 
The alleles that are expressed	Homozygous 